

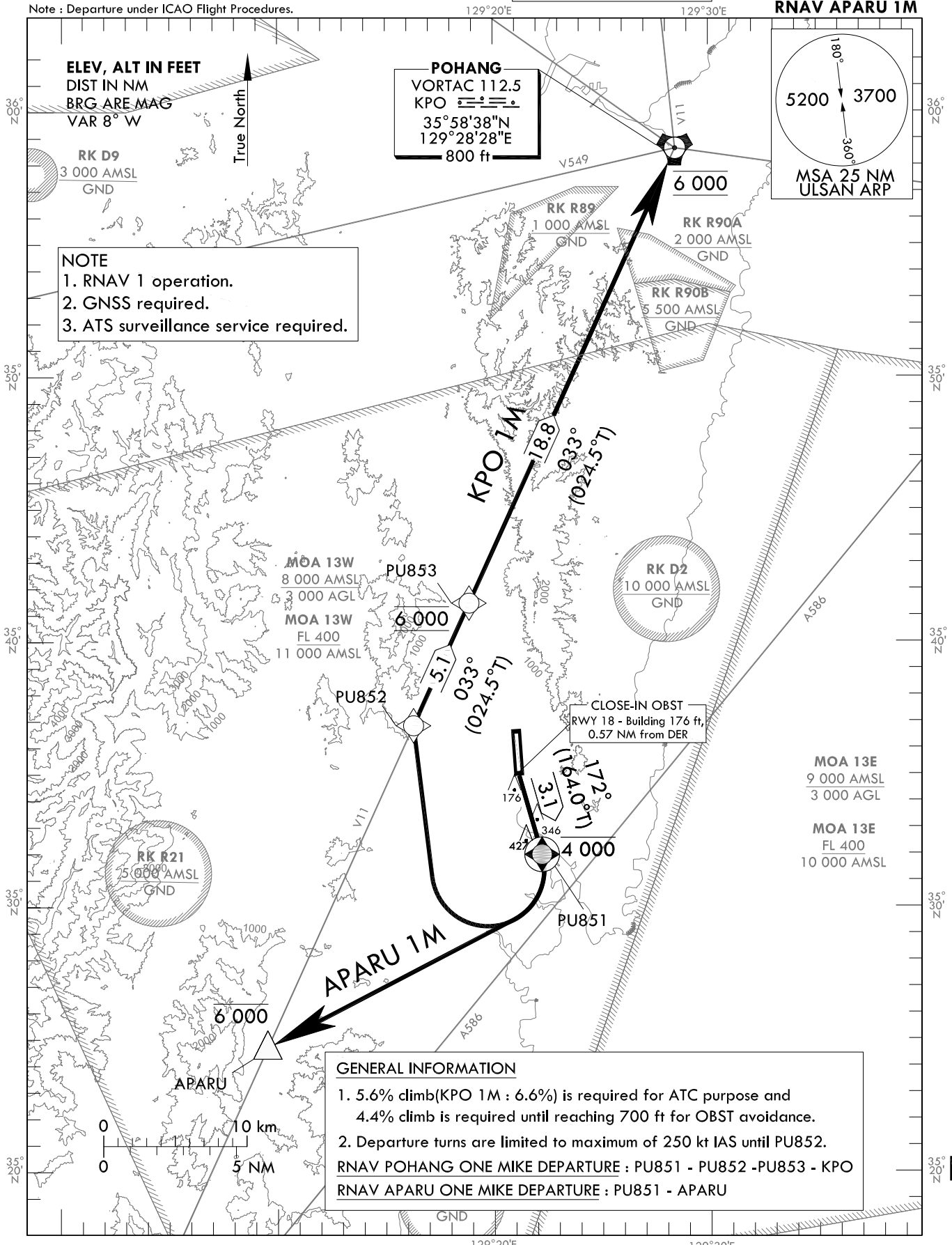
**STANDARD DEPARTURE CHART  
INSTRUMENT(SID) - ICAO**

TRANSITION ALT 14 000  
TRANSITION LVL FL 140

POHANG DEP 120.2, 124.25  
232.4  
ULSAN TWR 118.75

**ULSAN/Ulsan(RKPU)  
RWY 18  
RNAV KPO 1M  
RNAV APARU 1M**

Note : Departure under ICAO Flight Procedures.



**ELEV, ALT IN FEET  
DIST IN NM  
BRG ARE MAG  
VAR 8° W**

**NOTE**  
1. RNAV 1 operation.  
2. GNSS required.  
3. ATS surveillance service required.

**GENERAL INFORMATION**  
1. 5.6% climb(KPO 1M : 6.6%) is required for ATC purpose and 4.4% climb is required until reaching 700 ft for OBST avoidance.  
2. Departure turns are limited to maximum of 250 kt IAS until PU852.  
RNAV POHANG ONE MIKE DEPARTURE : PU851 - PU852 - PU853 - KPO  
RNAV APARU ONE MIKE DEPARTURE : PU851 - APARU

Change : Information of name for IFR flight procedure(KPO → POHANG).

ULSAN/Ulsan(RKPU)  
RWY 18  
RNAV KPO 1M  
RNAV APARU 1M

AERONAUTICAL DATA TABULATION

Standard Instrument Departure Procedure Coding Tables

RNAV KPO 1M

Serial Number	Path Descriptor	Waypoint Identifier	Fly-over	Course/Track °M(T)	Distance (NM)	Turn direction	Altitude (ft)	Speed (kt)	Coordinates	VPA/RDH	Navigation specification	Remarks
001	CF	PUB51	Y	172(164.0)	3.1	-	-4 000	-250	35°31'59.3"N 129°22'12.1"E	-	RNAV 1	-
002	DF	PUB52	-	-	-	R	-	-250	35°36'51.2"N 129°16'16.8"E	-	RNAV 1	-
003	TF	PUB53	-	033(024.5)	5.1	-	@6 000	-	35°41'28.6"N 129°18'51.5"E	-	RNAV 1	-
004	TF	KPO	-	033(024.5)	18.8	-	@6 000	-	35°58'37.9"N 129°28'28.3"E	-	RNAV 1	-

RNAV APARU 1M

Serial Number	Path Descriptor	Waypoint Identifier	Fly-over	Course/Track °M(T)	Distance (NM)	Turn direction	Altitude (ft)	Speed (kt)	Coordinates	VPA/RDH	Navigation specification	Remarks
001	CF	PUB51	Y	172(164.0)	3.1	-	-4 000	-250	35°31'59.3"N 129°22'12.1"E	-	RNAV 1	-
002	DF	APARU	-	-	-	R	-6 000	-	35°24'42.1"N 129°09'32.1"E	-	RNAV 1	-

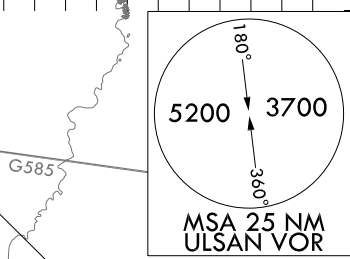
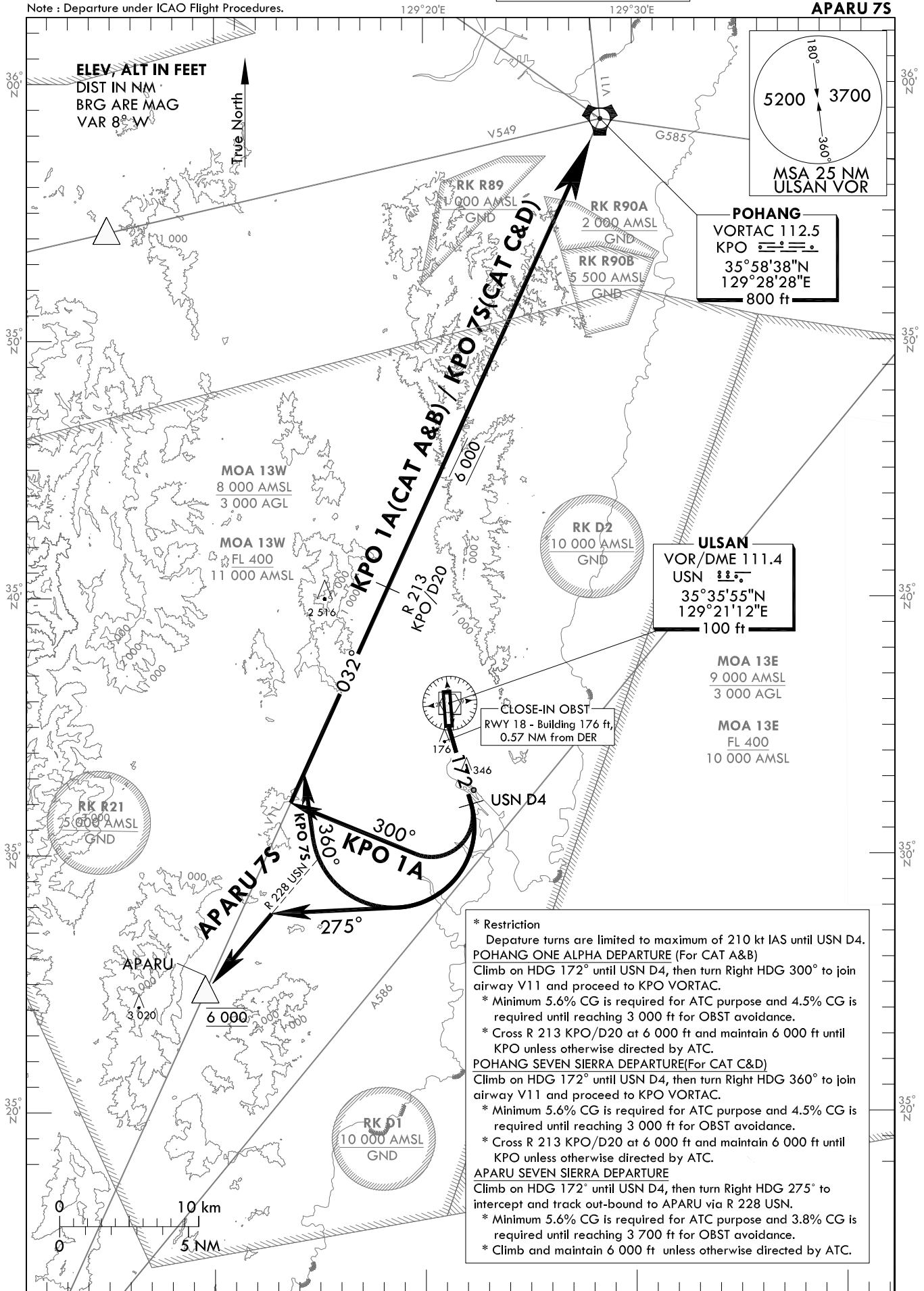
**STANDARD DEPARTURE CHART  
INSTRUMENT(SID) - ICAO**

TRANSITION ALT 14 000  
TRANSITION LVL FL 140

POHANG DEP 120.2, 124.25  
232.4  
ULSAN TWR 118.75

**ULSAN/Ulsan(RKPU)  
RWY 18  
KPO 1A, KPO 7S  
APARU 7S**

Note : Departure under ICAO Flight Procedures.



**POHANG**  
VORTAC 112.5  
KPO  $\equiv \equiv \equiv$   
35°58'38"N  
129°28'28"E  
800 ft

**ULSAN**  
VOR/DME 111.4  
USN  $\equiv \equiv$   
35°35'55"N  
129°21'12"E  
100 ft

**\* Restriction**  
Departure turns are limited to maximum of 210 kt IAS until USN D4.  
**POHANG ONE ALPHA DEPARTURE (For CAT A&B)**  
Climb on HDG 172° until USN D4, then turn Right HDG 300° to join airway V11 and proceed to KPO VORTAC.  
\* Minimum 5.6% CG is required for ATC purpose and 4.5% CG is required until reaching 3 000 ft for OBST avoidance.  
\* Cross R 213 KPO/D20 at 6 000 ft and maintain 6 000 ft until KPO unless otherwise directed by ATC.  
**POHANG SEVEN SIERRA DEPARTURE(For CAT C&D)**  
Climb on HDG 172° until USN D4, then turn Right HDG 360° to join airway V11 and proceed to KPO VORTAC.  
\* Minimum 5.6% CG is required for ATC purpose and 4.5% CG is required until reaching 3 000 ft for OBST avoidance.  
\* Cross R 213 KPO/D20 at 6 000 ft and maintain 6 000 ft until KPO unless otherwise directed by ATC.  
**APARU SEVEN SIERRA DEPARTURE**  
Climb on HDG 172° until USN D4, then turn Right HDG 275° to intercept and track out-bound to APARU via R 228 USN.  
\* Minimum 5.6% CG is required for ATC purpose and 3.8% CG is required until reaching 3 700 ft for OBST avoidance.  
\* Climb and maintain 6 000 ft unless otherwise directed by ATC.

Change : Withdrawal ALT limitation, radial, DIST information and Establishment of ALT limitation for APARU.

**INTENTIONALLY**

**LEFT**

**BLANK**

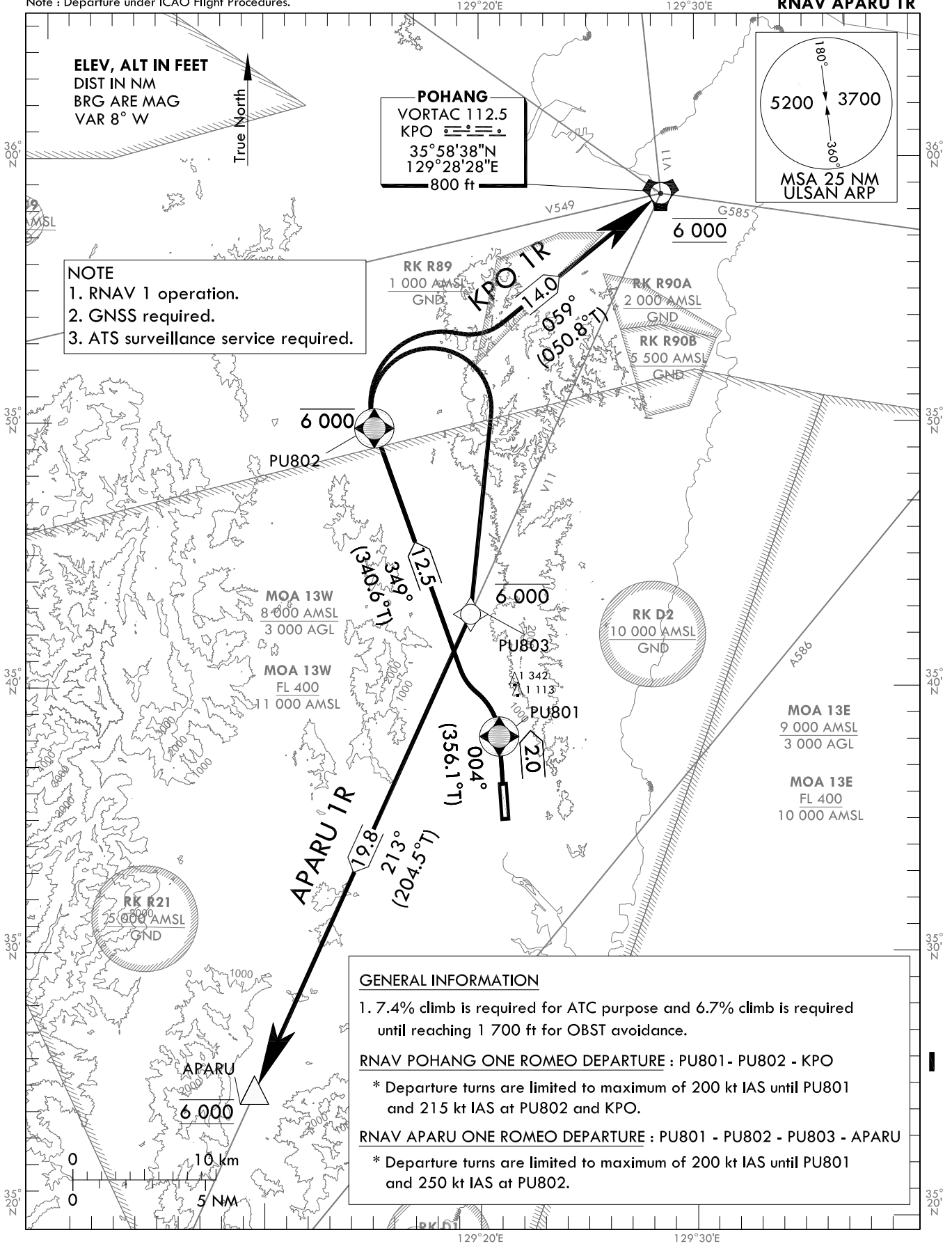
**STANDARD DEPARTURE CHART  
INSTRUMENT(SID) - ICAO**

TRANSITION ALT 14 000  
TRANSITION LVL FL 140

POHANG DEP 120.2, 124.25  
232.4  
ULSAN TWR 118.75

**ULSAN/Ulsan(RKPU)  
RWY 36  
RNAV KPO 1R  
RNAV APARU 1R**

Note : Departure under ICAO Flight Procedures.



Change : Information of name for IFR flight procedure(KPO → POHANG).

ULSAN/Ulsan(RKPU)  
RWY 36  
RNAV KPO 1R  
RNAV APARU 1R

AERONAUTICAL DATA TABULATION

Standard Instrument Departure Procedure Coding Tables

RNAV KPO 1R

Serial Number	Path Descriptor	Waypoint Identifier	Fly-over	Course/Track °M(°T)	Distance (NM)	Turn direction	Altitude (ft)	Speed (kt)	Coordinates	VPA/RDH	Navigation specification	Remarks
001	CF	PUB01	Y	004(356.1)	2.0	-	-	-200	35°38'08.8"N 129°20'53.5"E	-	RNAV 1	-
002	CF	PUB02	Y	349(340.6)	12.5	-	-6 000	-215	35°49'48.4"N 129°15'08.6"E	-	RNAV 1	-
003	TF	KPO	-	059(050.8)	14.0	-	@6 000	-215	35°58'37.9"N 129°28'28.3"E	-	RNAV 1	-

RNAV APARU 1R

Serial Number	Path Descriptor	Waypoint Identifier	Fly-over	Course/Track °M(°T)	Distance (NM)	Turn direction	Altitude (ft)	Speed (kt)	Coordinates	VPA/RDH	Navigation specification	Remarks
001	CF	PUB01	Y	004(356.1)	2.0	-	-	-200	35°38'08.8"N 129°20'53.5"E	-	RNAV 1	-
002	CF	PUB02	Y	349(340.6)	12.5	-	-6 000	-250	35°49'48.4"N 129°15'08.6"E	-	RNAV 1	-
003	DF	PUB03	-	-	-	R	-6 000	-	35°42'45.9"N 129°19'34.7"E	-	RNAV 1	-
004	TF	APARU	-	213(204.5)	19.8	-	@6 000	-	35°24'42.1"N 129°09'32.1"E	-	RNAV 1	-

STANDARD DEPARTURE CHART  
INSTRUMENT(SID) - ICAO

TRANSITION ALT 14 000  
TRANSITION LVL FL 140

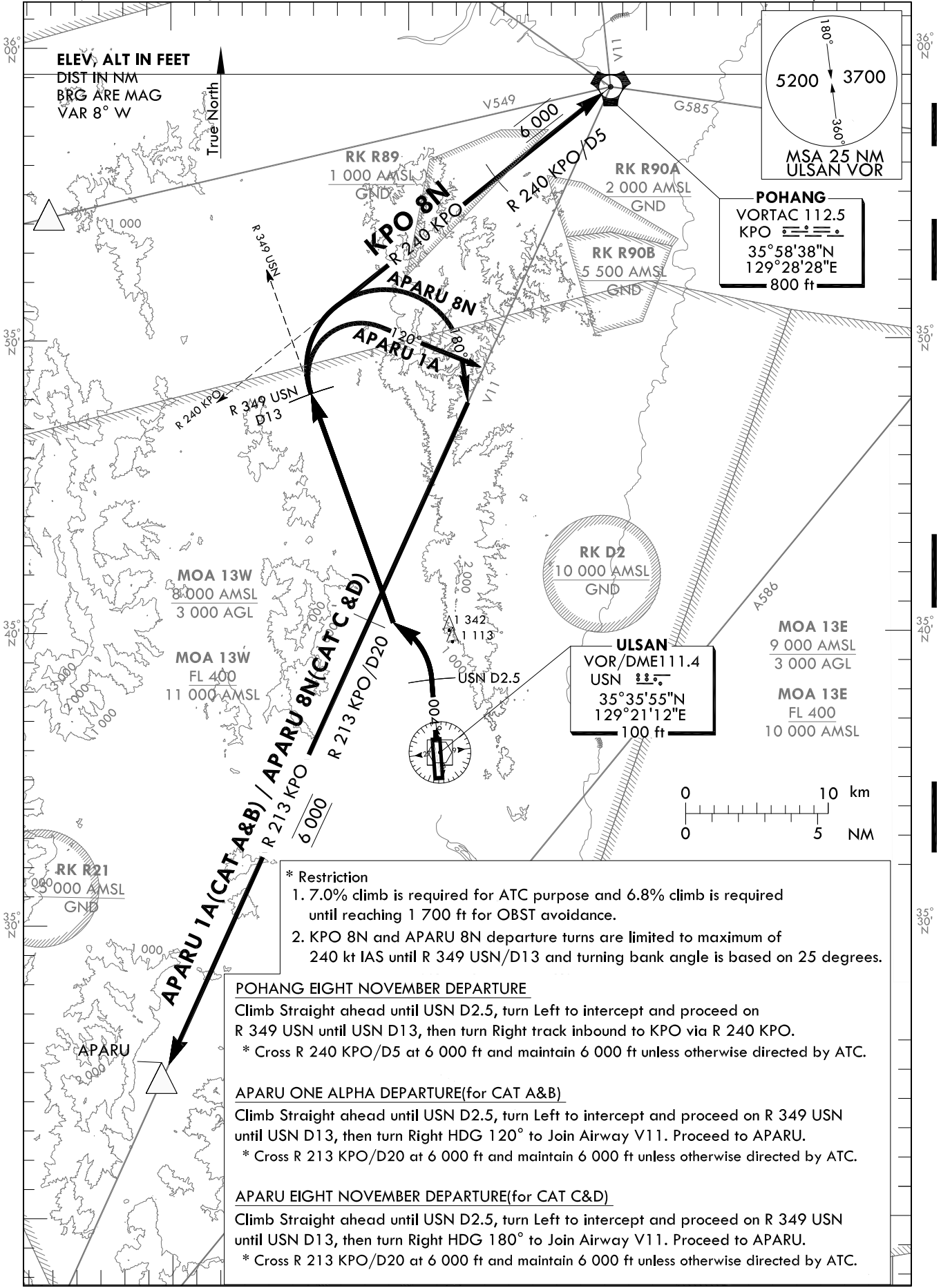
POHANG DEP 120.2, 124.25  
232.4  
ULSAN TWR 118.75

ULSAN/Ulsan(RKPU)  
RWY 36  
KPO 8N  
APARU 1A, APARU 8N

Note : Departure under ICAO Flight Procedures.

129°20'E

129°30'E



\* Restriction

1. 7.0% climb is required for ATC purpose and 6.8% climb is required until reaching 1 700 ft for OBST avoidance.
2. KPO 8N and APARU 8N departure turns are limited to maximum of 240 kt IAS until R 349 USN/D13 and turning bank angle is based on 25 degrees.

POHANG EIGHT NOVEMBER DEPARTURE

Climb Straight ahead until USN D2.5, turn Left to intercept and proceed on R 349 USN until USN D13, then turn Right track inbound to KPO via R 240 KPO.

\* Cross R 240 KPO/D5 at 6 000 ft and maintain 6 000 ft unless otherwise directed by ATC.

APARU ONE ALPHA DEPARTURE(for CAT A&B)

Climb Straight ahead until USN D2.5, turn Left to intercept and proceed on R 349 USN until USN D13, then turn Right HDG 120° to Join Airway V11. Proceed to APARU.

\* Cross R 213 KPO/D20 at 6 000 ft and maintain 6 000 ft unless otherwise directed by ATC.

APARU EIGHT NOVEMBER DEPARTURE(for CAT C&D)

Climb Straight ahead until USN D2.5, turn Left to intercept and proceed on R 349 USN until USN D13, then turn Right HDG 180° to Join Airway V11. Proceed to APARU.

\* Cross R 213 KPO/D20 at 6 000 ft and maintain 6 000 ft unless otherwise directed by ATC.

Change : Information of ALT limitation.

**INTENTIONALLY**

**LEFT**

**BLANK**